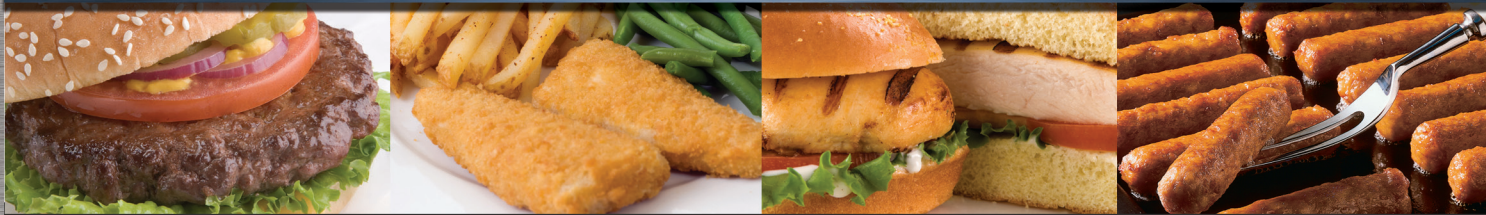




WEILER® DOMINATOR® 11 GRINDER

UNMATCHED THROUGHPUT. NEXT GENERATION TECHNOLOGIES.



A testament to the power of Weiler engineering, the Dominator 11 Grinder maximizes efficiency and lowers ownership costs at rates up to 30,000 lbs (13607 kg)/hour. It brings our exclusive Dominator and Balanced Flow™ technologies to the floor in an eleven inch system that's ideal for most grinding applications.

Dominator Technology is designed with fewer parts, self-aligning components and other efficiencies to simplify operation and make maintenance and sanitation easier. Balanced Flow™ eliminates rollback and unnecessary work to the raw material, ensuring consistent particle definition, excellent texture and the most premium end product overall. And like all Weiler equipment, the Dominator 11 Grinder is backed by worldwide 24/7 technical support from Provisur®.



FEATURES

- Heavy duty construction
- Stainless steel construction
- Spring loaded knifeholder
- Replaceable inserts
- Acme threads on head and ring
- Totally enclosed drive components
- Dominator technology
 - Improved product flow efficiency
 - Enhanced operational features
 - Superior hard tissue removal
 - Maximizes product quality

RAW MATERIAL

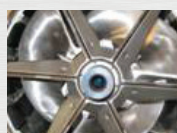
- Beef
- Pork
- Poultry
- Veal
- Mutton
- Seafood
- Other (consult factory)

Grinding capacity: Up to 30,000 lbs/hr (13,607 kg/hr)*

*Actual grind rate will depend on application specifications, including, but not limited to, reduction size, raw material and raw material temperature.

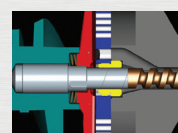


Safety labels removed for clarity on all images. All guards and labels must be in place while operating.



FEEDSCREW DRIVE LUGS

Built into the feed screw for greater drive strength.



SPRING-LOADED KNIFEHOLDERS

Featuring self-sharpening blade inserts for cleaner, cooler cutting and improved product quality.



BALANCED FLOW™

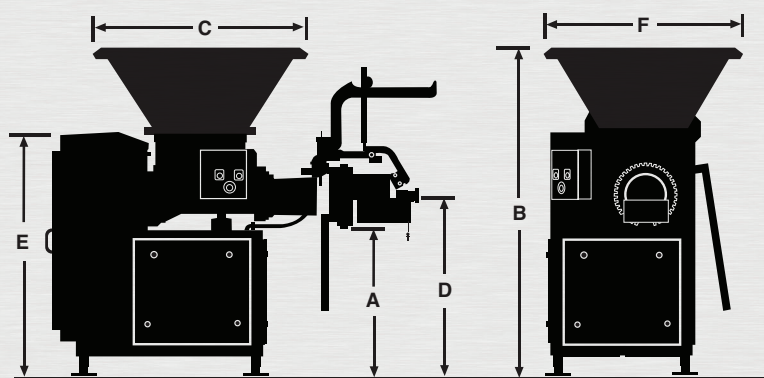
This engineering exclusive works gently on your material to produce the most premium end product possible.

WEILER® DOMINATOR® 11 GRINDER SPECIFICATIONS

DIMENSIONS inches (mm)					
A	B	C	D	E	F
35 (889)	79 (2006)	94 (2388)	43 (1092)	58 (1473)	49 (1245)

TECHNICAL

- Up to 50 hp (37 kw)
- 7 in. (180 mm) diameter feed screw
- 11 in. (280 mm) diameter plate
- Knifeholder – 3 or 6 blade configurations available
- 1780-6HD heavy duty gearbox
- 4-point suspension
- Approximate shipping weight: 2,350 lbs (1,066 kg)



Note: Certified drawings are available for installation purposes.

WE PUT IT ALL ON THE LINE.



Provisur® Technologies, Inc.

1116 East Main Street, Whitewater, Wisconsin 53190 USA

USA: 262-473-5254 800-558-9507 weilerinfo@provisur.com Europe: +44 (0) 1454 320900 provisur.com

GRINDERS - MIXER/GRINDERS - MIXERS - MATERIAL HANDLING - DOMINATOR® TECHNOLOGY - TOTAL SYSTEMS

©2012 Provisur® Technologies, Inc.